

DANGEROUS U.S. SPIDERBITESGUIDE



⚠️ BITE IDENTIFICATION ⚠️

It can be difficult to identify a spider bite by a skin wound alone. Any symptoms or lesions that may appear as a result of a spider bite are more dependent on each individual's reaction, so **an image of a specific species of spider bite is a poor diagnostic tool.**

Often times when people see an image of a brown recluse spider bite, for example, the wound they may see can often be attributed to other skin lesions or infections, including MRSA. **Even a physician is doing guesswork when trying to diagnose a spider bite.**

The only foolproof way is if the spider is captured immediately after or during the bite and identified by an expert. There are very few photographs of true spider bite wounds, so try to monitor your own symptoms and wounds without consulting images.

DANGEROUS US SPIDERS

BLACKWIDOW



ALSO KNOWN AS

- Southern black widow (*Latrodectus mactans*);
- Northern black widow (*Latrodectus variolus*);
- Western black widow (*Latrodectus hesperus*)

PHYSICAL CHARACTERISTICS

- The females are jet black, shiny & 1/4 inch long.
- They have a very distinct, red, hourglass shape on the underside of their abdomen.
- The males are half as large as the females.

REGIONS FOUND



Throughout U.S.

BITE PAIN LEVEL



SKIN DAMAGE LEVEL



BITE SYMPTOMS

- Reactions vary but can include:
- Immediate pain, burning, swelling
 - Cramping pain & muscle rigidity in many muscle groups
 - Headache
 - Dizziness
 - Rash & itching
 - Restlessness & anxiety
 - Sweating
 - Swelling of the eyelids
 - Nausea &/or vomiting
 - Salivation &/or tearing of the eyes

POSSIBLE BITE TREATMENTS

- See a doctor?
- Emergency Room?
- Life Threatening?
- May require medication?
- Wash with H2O?
- Apply ice?
- Apply pressure?
- Apply bandage?
- Wash with soap and water
- Use both cold & warm compresses
- Take acetaminophen or an antihistamine to reduce swelling

*Only if the victim is an infant or elderly

BROWN RECLUSE SPIDERS



ALSO KNOWN AS

- The violin spider (*Loxosceles reclusa*)

PHYSICAL CHARACTERISTICS

- Light brown legs & body.
- 1/4" - 1/2" long
- Only 6 eyes as opposed to conventional 8
- There is a distinct dark brown violin shaped marking on head & thorax.

REGIONS FOUND



Central & Southern U.S.

BITE PAIN LEVEL



SKIN DAMAGE LEVEL



BITE SYMPTOMS

- Reactions vary, but can include:
- Severe pain at bite site after about 4 hours
 - Severe itching
 - Nausea
 - Vomiting
 - Fever
 - Muscle pain
 - Blistering
 - Death of skin from necrotic venom
 - Severe destructive lesions with deep wide borders
 - Only 10% of bites result in anything more than a small red mark.

POSSIBLE BITE TREATMENTS

- See a doctor?
- Emergency Room?
- Life Threatening?
- May require medication?
- Wash with H2O?
- Apply ice?
- Apply pressure?
- Apply bandage?
- Keep area dry
- Avoid any strenuous activity because this can spread the spider's venom in the skin.
- Use acetaminophen for pain relief.

Seek the help of a physician for:

- Pain medication
- Antibiotics for signs of infection
- Antihistamines for itch relief
- The doctor may carefully remove dead tissue in areas

COMMONLY MISUNDERSTOOD (NOT DANGEROUS) US SPIDERS

HOBOSPIDERS



ALSO KNOWN AS

- (*Tegenaria agrestis*)

PHYSICAL CHARACTERISTICS

- This spider is about a 1/4 to 5/8 inches in length.
- It is brown with a distinct pattern of yellow markings on its back.
- These spiders do not climb but are very fast runners.

REGIONS FOUND



Northwest part of the U.S. WA, UT & in parts of Canada

BITE PAIN LEVEL



SKIN DAMAGE LEVEL



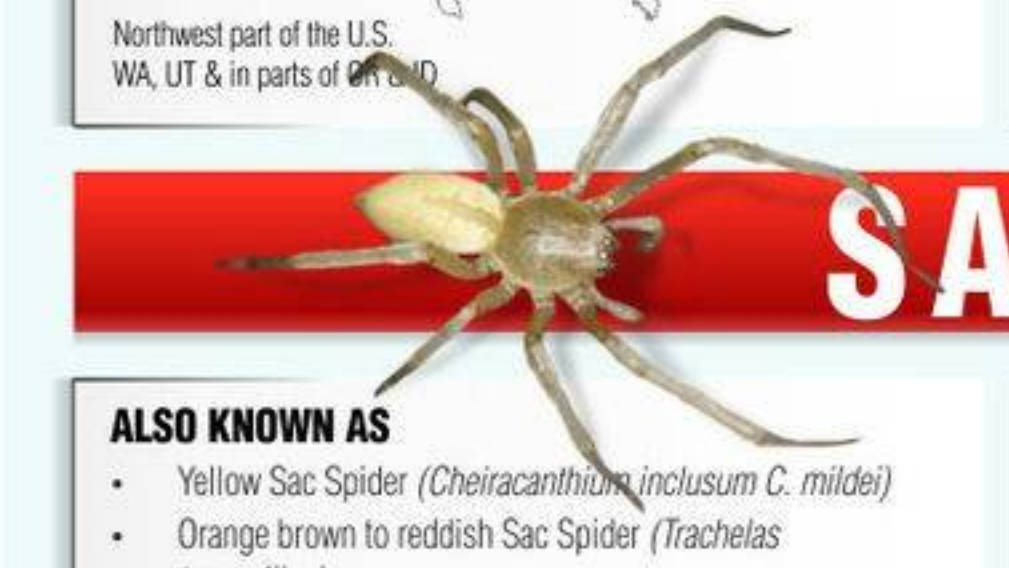
BITE SYMPTOMS

- The bite can go completely unnoticed.
- Bites have been reported to cause severe headaches that last for several days.
- Often blamed for necrotic wounds, but this is often from other factors.

POSSIBLE BITE TREATMENTS

- See a doctor?
- Emergency Room?
- Life Threatening?
- May require medication?
- Wash with H2O?
- Apply ice?
- Apply pressure?
- Apply bandage?
- Clean the site with soap & water
- Take acetaminophen or an antihistamine to reduce swelling
- Watch bite closely for signs of infection

SAC SPIDERS



ALSO KNOWN AS

- Yellow Sac Spider (*Cheiracanthium inclusum C. mildei*)
- Orange brown to reddish Sac Spider (*Trachelas tranquillus*)

PHYSICAL CHARACTERISTICS

- These spiders are often misidentified as brown recluse spiders.
- They are very small, about 1/4 inch to 3/8 of an inch long & no conspicuous markings but their front legs are longer than the rest of their body & legs.
- They are very pale & can be yellow, greenish, & tan.

REGIONS FOUND



Found throughout USA

BITE PAIN LEVEL



SKIN DAMAGE LEVEL



BITE SYMPTOMS

- A stinging sensation is common, similar to a bee sting.

POSSIBLE BITE TREATMENTS

- See a doctor?
- Emergency Room?
- Life Threatening?
- May require medication?
- Wash with H2O?
- Apply ice?
- Apply pressure?
- Apply bandage?
- Wash with soap and water
- Take acetaminophen or an antihistamine to reduce swelling
- Watch bite closely for signs of infection

LARGE SPIDERS



ALSO KNOWN AS

- Wolf Spider *Rabidosa rabida* (Walckenaer)
- (Araneae: Lycosidae)

PHYSICAL CHARACTERISTICS

- Large spiders, such as the wolf spider that is commonly found in the United States, look creepy but are mostly harmless.
- Their bites will be felt, because of their large size, but are not considered to be dangerous.
- There are close to 300 different species of wolf spider in the US, and about 2,500 worldwide!

REGIONS FOUND



Found throughout USA, including AK

BITE PAIN LEVEL



SKIN DAMAGE LEVEL



BITE SYMPTOMS

- Local pain, with mild skin irritation to muscle pain.
- Should treat as a common spider bite.

POSSIBLE BITE TREATMENTS

- See a doctor?
- Emergency Room?
- Life Threatening?
- May require medication?
- Wash with H2O?
- Apply ice?
- Apply pressure?
- Apply bandage?
- Wash area with soap & water
- Take acetaminophen or an antihistamine to reduce swelling
- Watch bite closely for signs of infection

PARSON SPIDERS



ALSO KNOWN AS

- Eastern parson spider (*Hemiphysalis ecclesiastica*)

PHYSICAL CHARACTERISTICS

- Vary from a brown head to a black or gray thorax.
- They are a 1/2 inch long & have a distinctive white or pink pattern on their middles & are covered in fine hairs, appear velvety.

REGIONS FOUND



Throughout U.S. There is an Western and Easter Parson spider, divided by Rocky Mountains.

BITE PAIN LEVEL



SKIN DAMAGE LEVEL



BITE SYMPTOMS

- Generally considered to be non-toxic, yet some have allergic reactions to the bites.
- There is a range of severity but localized allergic swelling & itching & initial pain can occur.

POSSIBLE BITE TREATMENTS

- See a doctor?
- Emergency Room?
- Life Threatening?
- May require medication?
- Wash with H2O?
- Apply ice?
- Apply pressure?
- Apply bandage?
- Wash the bite with soap & water
- Take acetaminophen or an antihistamine to reduce swelling
- Watch bite closely for signs of infection